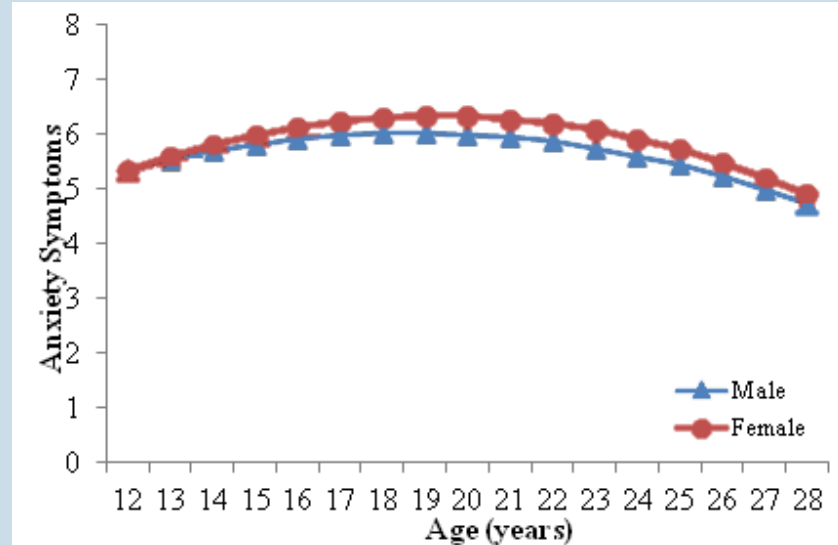
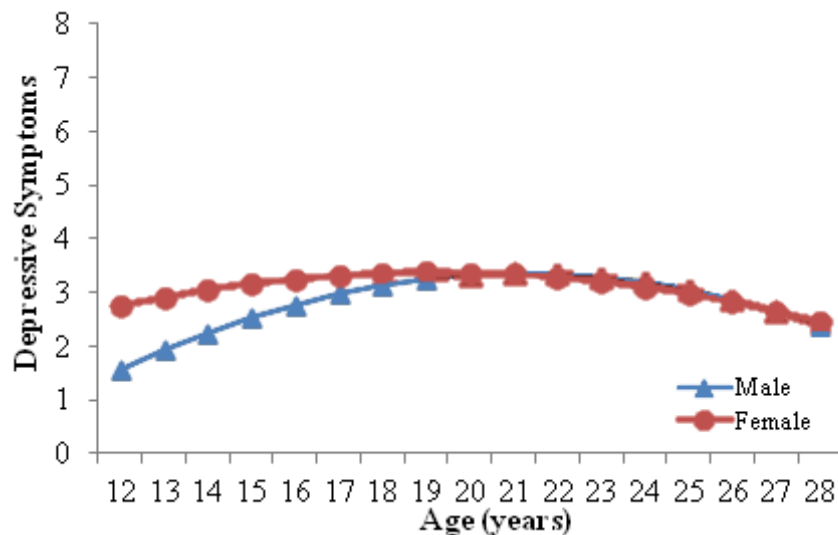


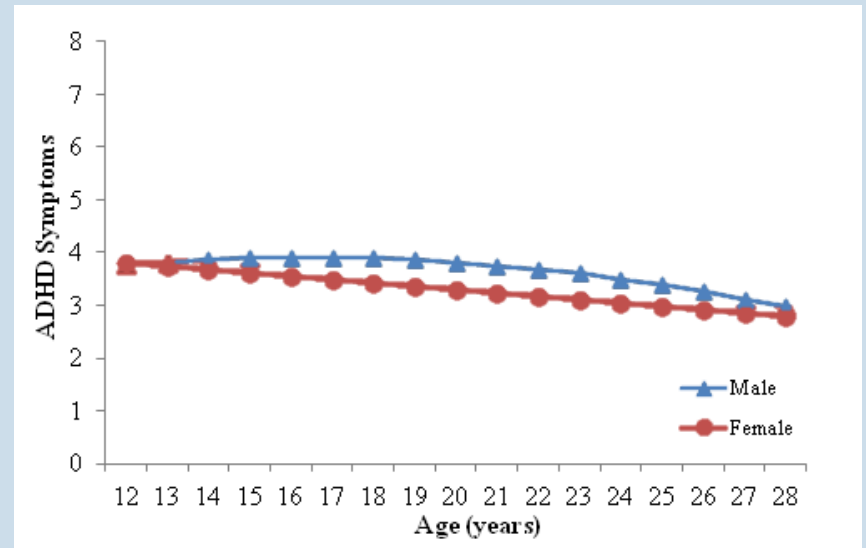
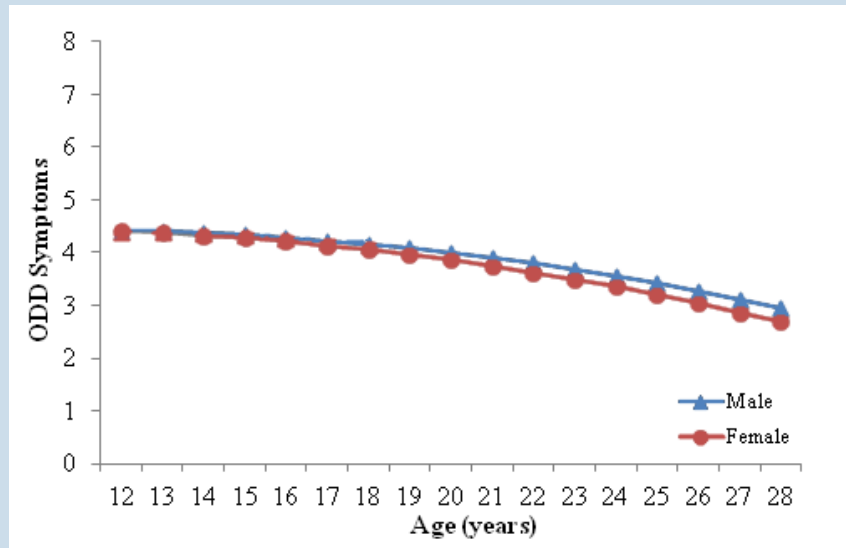
# SYMPTOMS OF DEPRESSION & ANXIETY



... rise across adolescence and begin to decline by age 23

# DECLINING BEHAVIOUR PROBLEMS

## Symptoms of Oppositional Defiance & ADHD declining



**ODD symptoms (defiance & irritability)  
affect educational achievement & job strains in 2013  
(Leadbeater & Ames, in preparation)**

# PSYCHOPATHOLOGY PERSISTS ACROSS THE TRANSITION TO YOUNG ADULTHOOD.

- Youth who start high in one domain are consistently high in the others.
- Increases in depression & anxiety are correlated.
- Increases in depression & oppositional defiant symptoms are also correlated.

Leadbeater, Thompson, & Gruppuso, 2012