

The Computer Help Desk presents

J E O P A R D Y



H A L L O W E E N !



TRICK



or

TREAT!

The Computer Help Desk presents:

Jeopardy:
CALL Facility
REBOOT
VERSION

HELLO IT
2017 World Series

The Computer Help Desk presents:

Jeopardy:
TRIPLE re-BOOT

THE IT CROWD
VERSION 34 (CALL 400) | 34 (CALL 400) | 34 (CALL 400)

The Computer Help Desk presents:

Jeopardy IV
POP CULTURE

Computing Facilities Challenge!

The Computer Help Desk presents:

Jeopardy
MEMES "R" US

JEOPARDY

Generation CHD

The Computer Help Desk presents:

Jeopardy IV
ENDGAME

Computing Facilities Challenge!

Jeopardy

Greg's Playlist

The Computer Help Desk presents:

Jeopardy III:
Knee-d-Full Things

Computing Facilities Challenge!

JEOPARDY XI

Greg's Playlist II

The Computer Help Desk presents:

Jeopardy II:
CALL++ Version

Computing Facilities Challenge!

The Computer Help Desk presents:

Jeopardy:
CALL Version

CALL Facility Challenge!

CHD WORKSHOP

- What is CALL?
- What is WICKET?
- Questions.....

SPOOKY START TO

HALLOWEEN



JEOPARDY The 13th!

HALLOWEEN JEOPARDY 2023

Horror Movie Quotes

Game over, man!

I see dead people

They're here...

Here's Johnny!

I ate his liver with some
fava beans & a nice Chianti

Be afraid.

Be very afraid.

I never drink ... wine

FITB Movies

A _____ on Elm Street

The _____ Sense

Bram Stoker's _____

The _____ Boys

_____ with the Vampire

_____ of the Lambs

TR _____ RS

Halloween Dad Jokes

What vehicle does
Frankenstein drive?

Why don't vampires attack
Taylor Swift?

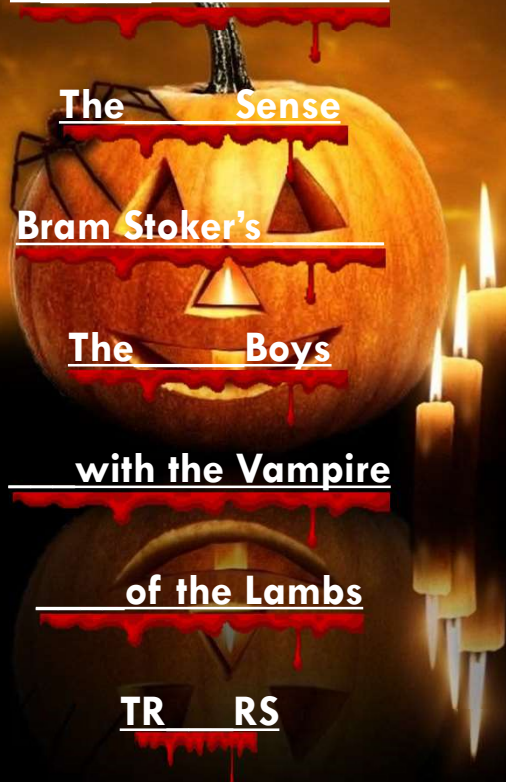
What music do
mummies like best?

What do you get when you
cross Bambi with a ghost?

What does a skeleton say
before eating?

What is a pumpkin's
favourite sport?

What do horses dress up as
on Halloween?



Y
D
R
A
P
D
E
J



HORROR MOVIE QUOTES

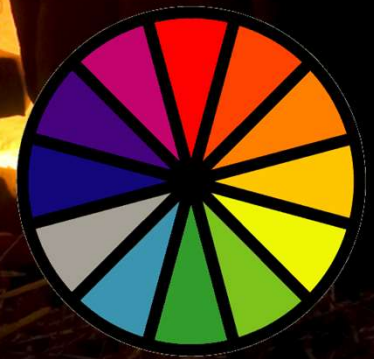
Only Marcus or Dave can write a new CHD password
down on an OFFICIAL CHD Post-It note!
DOUBLE True/False Question!

CHD

Aliens



True/True
True/False
False/False
False/True



HORROR MOVIE QUOTES

NOBODY ***Spoiler Alert***
to write it down! KeePassXC!



Unlock KeePassXC Database
C:\demo\demo.kdbx

Enter Password:

Enter Additional Credentials (if any):

Key File: ? Browse...

Hardware Key: ? Refresh

OK Cancel

~~True/True~~
~~True/False~~
~~False/False~~
~~False/True~~



[Back to Categories](#)

HORROR MOVIE QUOTES

**Former employees are eligible for
Legacy email forwarding**

The Sixth



TRUE
or
FALSE

HORROR MOVIE QUOTES

FALSE !! (not even if also a former student!)

SPOOKY



Legacy email forwarding

Eligibility

- **Former students** and **alumni** are eligible, so long as they had a webmail/Unix (**not Exchange**) mailbox.
- **Former employees aren't eligible** (even if they were also students) to set up new email forwarding.



[Back to Categories](#)

HORROR MOVIE QUOTES

They all have one thing in common

Duane Johnson

Timothée Chalamet

Jason Momoa

Jennifer Lawrence

Leonardo DiCaprio

Billie Elish

Lady Gaga

Taylor Swift

Hint: Steve Jobs



What celebrities have...

HORROR MOVIE QUOTES

What celebrities have all appeared in Apple commercials?

Duane Johnson
Timothée Chalamet
Jason Momoa
Jennifer Lawrence
Leonardo DiCaprio
Billie Elish
Lady Gaga

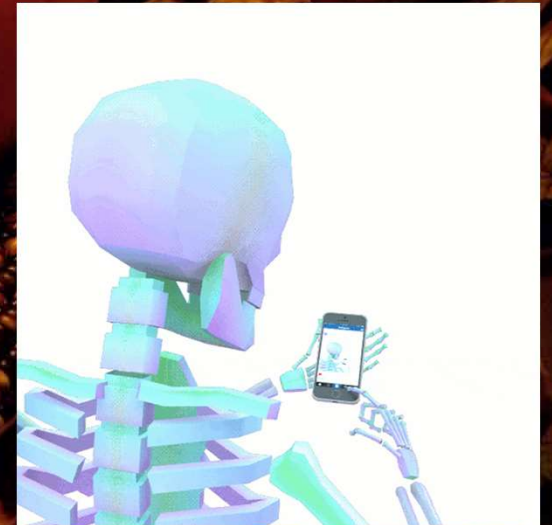


[Back to Categories](#)

HORROR MOVIE QUOTES

**ALL students are eligible to create
Teams and Sharepoint sites**

The Shining



TRUE OR FALSE

HORROR MOVIE QUOTES

Dramatic ... Pause Only Active Employees are eligible to create new Teams and sites (KB)



When to use
Microsoft
Teams?



[Back to Categories](#)

HORROR MOVIE QUOTES

FILL IN THE BLANKS!!!

All are **BLOCKED**
by UVic servers



Silence of the Lambs



A census taker once tried to test me.



What are 5
examples of
f _ e _ e _ s ?

meat

HORROR MOVIE QUOTES

What are 5
examples of
file extensions?



.cab



.gadget



.bat



.one



.jarjar



[Back to Categories](#)

HORROR MOVIE QUOTES

FILL IN THE BLANKS!!!

_____ are an attack vector that is increasingly being used by malicious actors to compromise systems.

The default at UVic is blocking them all



What are

B _____ P _____ (or)
E _____ ?



HORROR MOVIE QUOTES



What are Browser Plug-ins or Extensions?



Browser Plugin / Extension Management

Browser Plugins (also called Extensions) are an attack vector that is increasingly being used by malicious actors to compromise systems. To reduce this risk at UVic, we have implemented default blocking of all plugins for our common/recommended web browsers.



BONUS



o-GIF-ic Prize!!



[Back to Categories](#)

HORROR MOVIE QUOTES

ANAGRAMS!!!!!!

Japan
Aim
Amount

Loop

Whee

Guru

Three

Transporting

Enchilada



racula



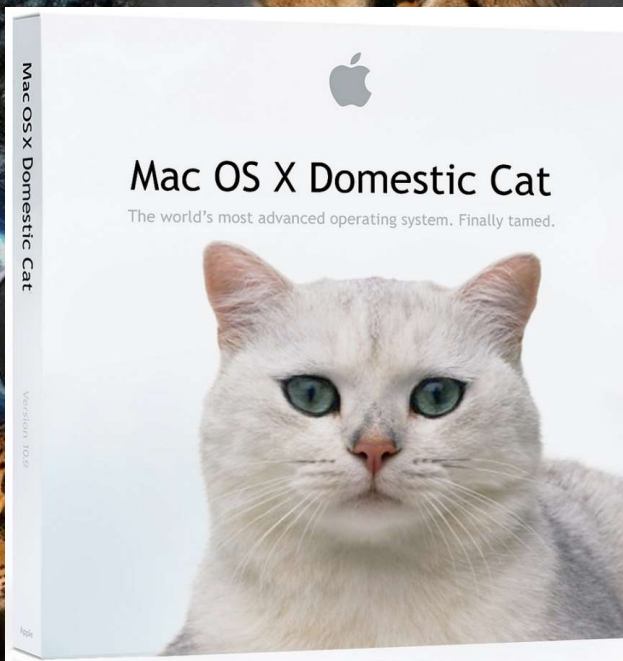
HORROR MOVIE QUOTES

What are anagrams for the 'CAT' Apple OS releases?



Asha

Ember



Operating system
10.0 "Cheetah" ^[note 1]
10.1 "Puma"
10.2 "Jaguar" ^[note 2]
10.3 "Panther"
10.4 "Tiger"
10.5 "Leopard"
10.6 "Snow Leopard"
10.7 "Lion" ^[note 3]
10.8 "Mountain Lion"

Roy

[Back to Categories](#)

FILL IN THE BLANK MOVIES

MORE !!!!!

HIERO-*GIF*-ICS

MORE !!!!!

 +  + KNOWLEDGE +  = ?

A Nightmare on Elm Street



What is our new ...

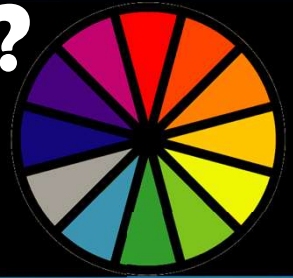


FILL IN THE BLANK MOVIES

What is our new Wick E Knowledge Base?



KNOWLEDGE



[Back to Categories](#)

FILL IN THE BLANK MOVIES

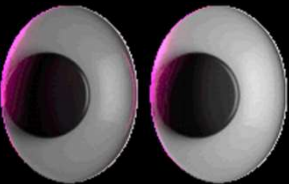
MORE!!!!

HIERO-GIF-ICS

MORE!!!!



eh



+

+



= ?

The S: Sense



hat is ...



FILL IN THE BLANK MOVIES

OAC



+

Phish

+

Bowl



[home](#) » [status update](#) » [features](#)

University Systems status update

Phishing

Phishing is a common online scam designed to trick you into revealing sensitive personal information (e.g. passwords, credit card numbers, your SIN) that is then used for fraud or identity theft. Phishing typically takes the form of an email message that appears to come from a trusted organization (e.g. your bank, the university), but is actually from the identity thieves. It is intentionally difficult to tell the difference between a legitimate message and a phishing message.

[Register for online training in Brightspace](#)



Phish Bowl

Phishing emails spotted at UVic

ABOUT

The UVic [Information Security Office](#) analyzes phishing emails seen at UVic on a daily basis. Example copies of some phishing messages and other scams are posted here for information and awareness.

- [Learn more](#) about identifying and protecting yourself against phishing
- Read more [cybersecurity bulletins](#)
- Report phishing to the [Computer Help Desk](#)



[Back to Categories](#)

FILL IN THE BLANK MOVIES

MORE ANAGRAMS!!!

Boarder Terror

Frogs Cohere

Distinguishable Farmland

Biological Redder

Agonized Helps

57

Harem Modem

~~The Matrix Bram Stoker's Dracula~~



What are
anagrams for ...



FILL IN THE BLANK MOVIES



What are anagrams for all
the **DOG BREEDS** at CHD!



[Back to Categories](#)

FILL IN THE BLANK MOVIES



Spot the Differences



BEFORE



AFTER

What does CLE A112 need...



'Bill' & Ted's



FILL IN THE BLANK MOVIES



What does CLE A112 need at closing?



BEFORE



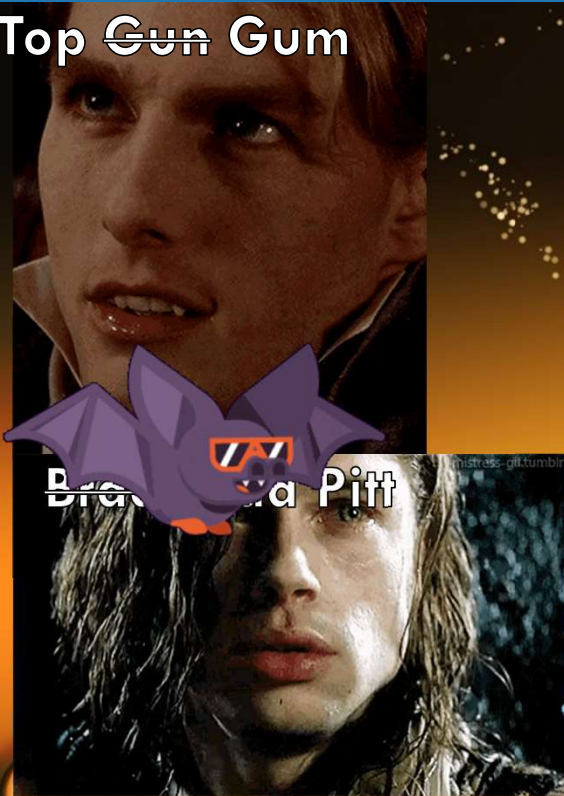
AFTER

[Back to Categories](#)

FILL IN THE BLANK MOVIES

UVic's primary online learning platform used for academic courses, training & professional development

Top Gun Gum



What is ...



Count Mike-ula



FILL IN THE BLANK MOVIES

What is D2L Brightspace?

Brightspace

Published 6/29/2023

D2L Brightspace is UVic's primary online learning platform. It's mostly used for academic courses, but also training and professional development courses.

D2L (or [Desire2Learn](#)) is a [Canada-based](#) global [software company](#) with offices in [Australia](#), [Brazil](#), [Europe](#), [Singapore](#), and the [United States](#).

[Back to Categories](#)

FILL IN THE BLANK MOVIES

FILL IN THE BLANKS!!!

_____ is dedicated to delivering secure and effective computer access, networking, hardware and support across the institution that is the University of Victoria

Silence of the Lambs

What is



FILL IN THE BLANK MOVIES

UNIVERSITY SYSTEMS



NOT
a recommended mask
.... ANYTIME!



SCAVENGER
HUNT!



[Back to Categories](#)

FILL IN THE BLANK MOVIES

Multiple Choice!

M ___ A ___ C ___ address
stands for

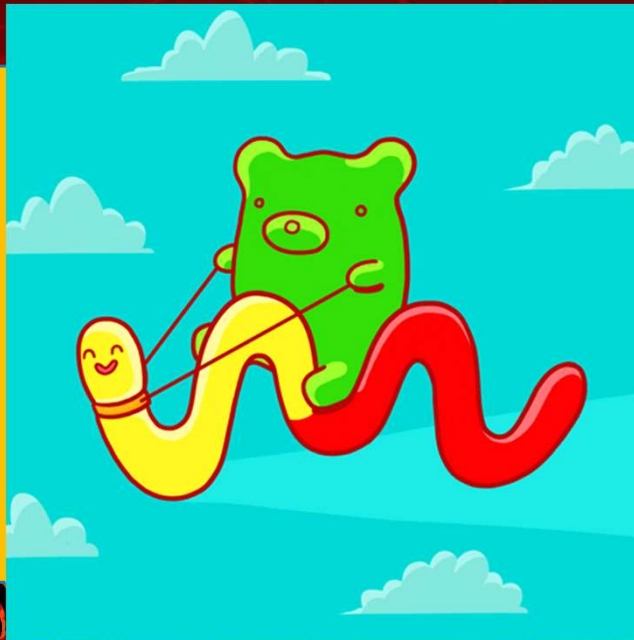


Tremors



Kevin Bacon

- a)
- b)
- c)
- d)
- e)
- f)



CHD

nts



FILL IN THE BLANK MOVIES



d) Media Access Control



A media access control address (MAC address) is a unique identifier assigned to a network interface controller (NIC). It identifies a hardware interface (like a computer's Wi-Fi or Ethernet controller) and exists independent of an active network connection. MAC addresses are six pairs of characters. E.g., C6-7A-C1-AD-21-D7

**SEND
WORMS**

- ~~a) Nearest MACdonalds~~
- ~~b) Nearest iMAC to CHD~~
- ~~c) TSC Backroom~~
- d) Media Access Control**
- ~~e) Media Access Command~~
- ~~f) More Amazing Consultants~~



[Back to Categories](#)

HALLOWEEN **DAD** JOKES

Multiple Choice!

UVic utilizes _____ to protect computers against known malicious software



- a) Norton's Anti Virus
- b) Gerry in Shipping/Handling
- c) The Mighty Thor
- d) MSDE
- e) Teenage Mutant Ninja Penguins
- f) CHD Pets (Remote job sharing)
- g) sticksandstones.bat
- h) Excessive caffeine products

HALLOWEEN DAD JOKES



d) MSDE (Microsoft Defender for Endpoint)

HAPPY
Halloween



Microsoft
Defender
For Endpoint

- ~~a) Norton's Anti-Virus~~
- ~~b) Gerry in Shipping/Handling~~
- ~~c) The Mighty Thor~~

d) MSDE

- ~~e) Teenage Mutant Ninja Penguins~~
- ~~f) CHD Pets (Remote job-sharing)~~
- ~~g) sticksandstones.bat~~
- ~~h) Excessive caffeine products~~

[Back to Categories](#)

HALLOWEEN DAD JOKES

When to use
Microsoft
Teams?



Teams are automatically provisioned for a course BUT need Instructors to



HAPPY
Halloween



HALLOWEEN DAD JOKES

TRICK
OR
TREAT

TRUE!!!!



Provisioning & access requests

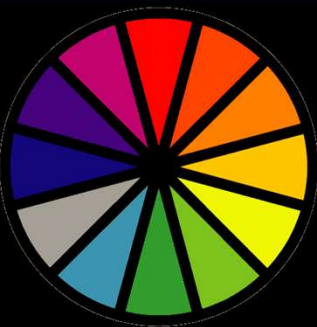
- Teams are automatically provisioned for every CRN course. Instructors will only need to activate them.
- For requests to create any other new team, see [Create a new team or SharePoint site](#).

[Back to Categories](#)

HALLOWEEN DAD JOKES

ALL CHD QUESTION !!!!

Doctor Who would easily beat
Doctor Strange in a fight!



DOCTOR WHO



**TRUE
OR
FALSE**
(prizes!)

(prizes!)
**TRUE
OR
FALSE**

HALLOWEEN DAD JOKES

TRUE & ALWAYS TRUE!



Hello, I'm the Doctor.

BBC
AMERICA
RICA



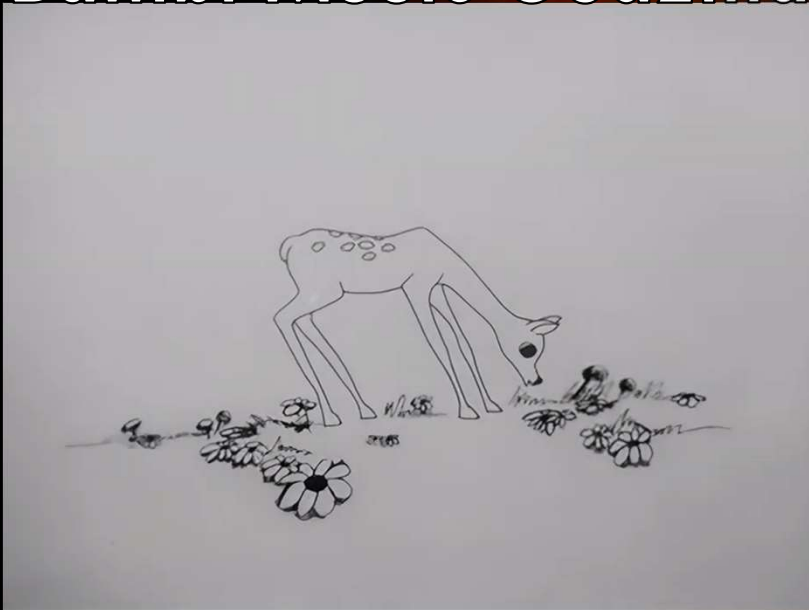
[Back to Categories](#)

HALLOWEEN DAD JOKES

MULTIPLE CHOICE!

How many Help Desk
BAMBOO!
phone lines in TOTAL?

Bambi Meets Godzilla



- a) 8
- b) 9
- c) 11
- d) 13
- e) π
- f) Seems like ∞

HALLOWEEN DAD JOKES



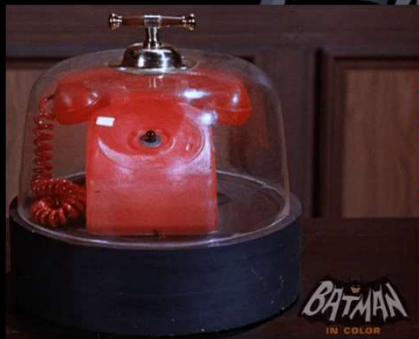
MOTHRA

c) 11!



RODAN

- ✓ 6147 CHD Main
- ✓ 4550 CHD Faculty/Staff (Urgent Voicemail)
- ✓ 4551 CHD Faculty/Staff (Non-urgent Voicemail)
- ✓ 4552 CHD Student
- ✓ 4553 Audio visual (Urgent)
- ✓ 3572 TSC
- ✓ 4612 TSC Hardware Room
- ✓ 7684 Clearihue UF
- ✓ 8959 CALL
- ✓ 8910 BEC
- ✓ 6392 HSD



#TEAMKONG

1

~~seems like ∞~~

[Back to Categories](#)

HALLOWEEN **DAD** JOKES

MULTIPLE CHOICE!

Who is THE MOST Super Hot Dog Fan
Bone Appetit!
in all of CHD?

- a) Dave
- b) Sophie
- c) Kelly
- d) Mike
- e) Allison
- f) Marcus
- g) Gary
- h) Tomoyo
- i) Heather
- j) Greg



HALLOWEEN **DAD** JOKES

d) MIKE !!!!

a) Dave

b) Sophie

c) Kelly

d) Mike!!

e) Allison

f) Marcus

g) Gary

h) Tomoyo

i) Heather

j) Greg



[Back to Categories](#)

HALLOWEEN DAD JOKES



Doctor Who appears in the middle of CHD
and asks for help adjusting the
emergency brake on The TARDIS



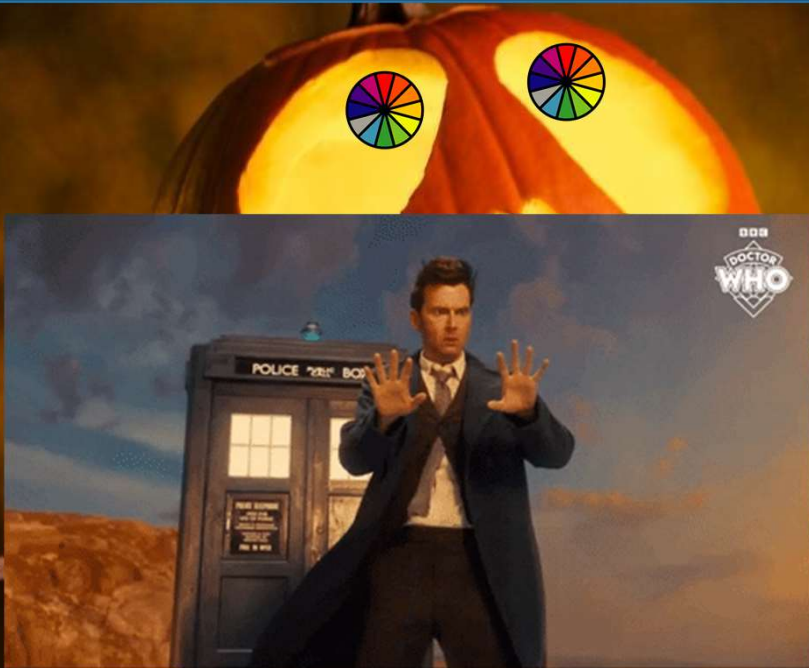
When to check if
The Doctor is



Everyone knows Halloween
puns are so corny

HALLOWEEN DAD JOKES

When to check if **The Doctor** is DSS supported?



TOBLERONE





[Back to Categories](#)

HALLOWEEN DAD JOKES

Multiple Choice!

CBV Photo ID requirements!!

- 
- 
- a) All of the ... below
 - b) None of the ... below
 - c) **Must be government issue**
 - d) **Must be UVic issue**
 - e) Must show photo of client
 - f) Must show photo of pets
 - g) **Must show client's date of birth**
 - h) **Must show SIN number**
 - i) **Only c, e and g**

HALLOWEEN DAD JOKES

i) Only c, e and g

* A UVic OneCard is acceptable only if the



is a student (and not also an employee or former employee) and needs to be able to log their account and/or change their password reset token and can tell you their date of birth.

~~e) All of the ... below~~

~~b) None of the ... below~~

c) Must be government issue ✓

~~d) Must be UVic issue*~~

e) Must show photo of client ✓

~~f) Must show photo of pets~~

g) Must show client's date of birth ✓

~~h) Must show SIN number~~

i) Only c, e and g ✓✓

[Back to Categories](#)



Jeopardy



HALLOWEEN!



CHD Jeopardy



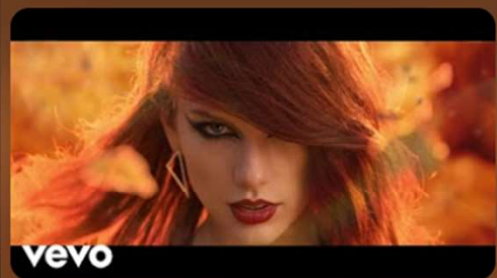
CHD Jeopardy II



CHD Jeopardy III



CHD Jeopardy Double Trouble



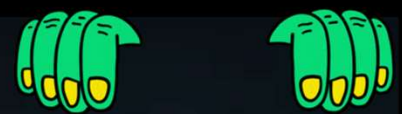
CHD Jeopardy the 13th Halloween Edition



Star Wars *Thriller* Biometrics ...
AFTER LUNCH!



BOO!



gifs.com

