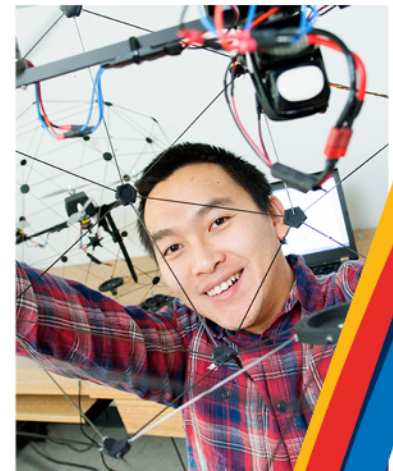
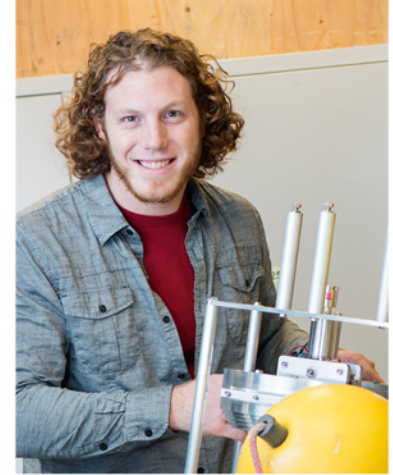




# Working together for student success

**Let's Talk About Teaching  
New Faculty and Librarian Orientation**

Jim Dunsdon  
Associate Vice President Student Affairs



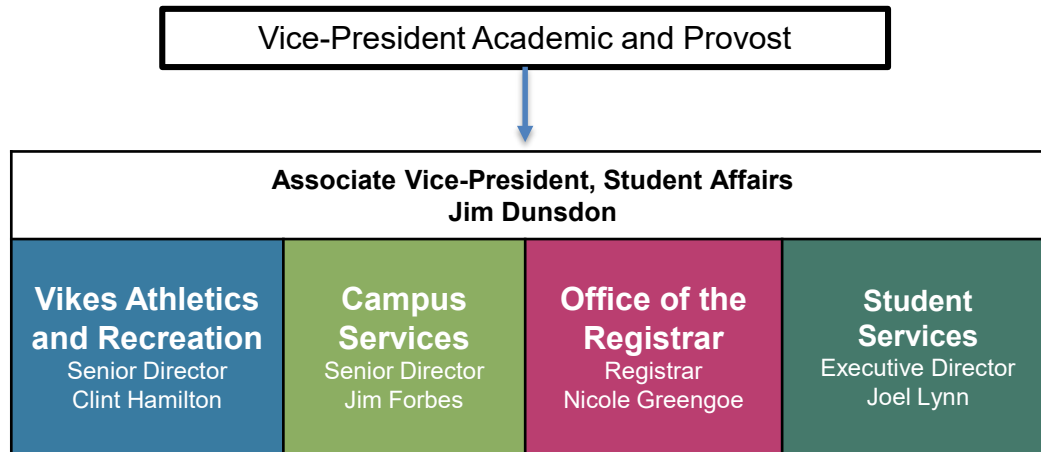


# Today's agenda

- Student Affairs at UVic
- Our 2021-22 student population
  - Entering class
  - Student populations
  - Key student supports
- Double cohort



# About the Division of Student Affairs



- 26 functional units
- Work to create a vibrant and engaging learning community
- Partners in student success
- Support both the academic and personal success of UVic students





# Student Affairs vision

Together, we transform students' lives.

## **Priorities for 2021-22:**

- Strategic Enrolment Management (SEM)
- New Student Housing & Dining Project
- Childcare Expansion
- Campus Wellness Strategy
- Equity, Diversity & Inclusion Project for Division



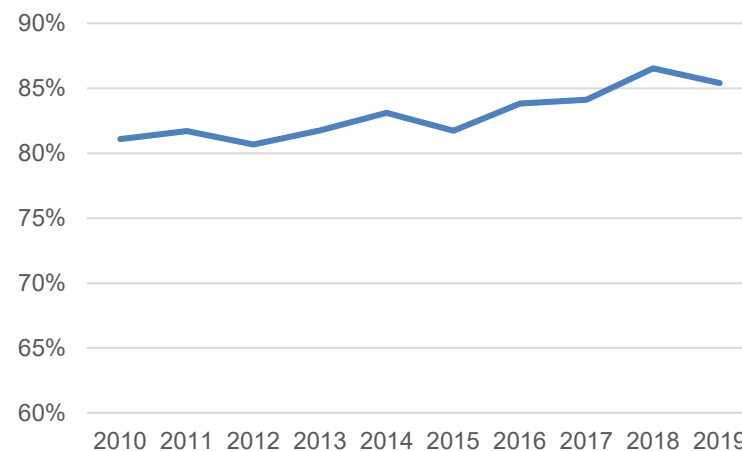


# Student Population

- 22,063 students enrolled at UVic (as of July 2021)
  - 87% undergraduate
  - 13% graduate

	Registered Students			
Entering Average	2017-2018	2018-2019	2019-2020	2020-2021
98-100%	14	30	28	92
96-97.99%	83	89	95	217
94-95.99%	101	113	129	225
90-93.99%	348	494	422	710
<b>Total</b>	<b>546</b>	<b>726</b>	<b>674</b>	<b>1244</b>

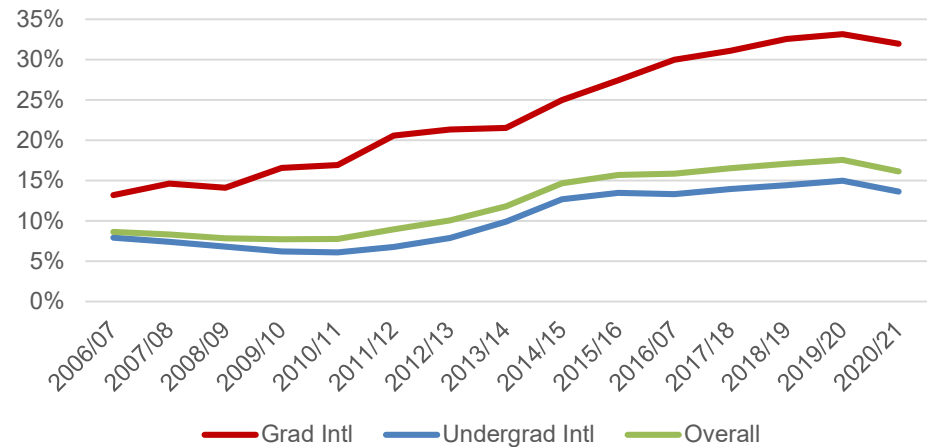
**Retention Rates  
University of Victoria 2010/11 to  
2019/20**



# Student Population: International

- 14% of all undergraduate students
- 32% of all graduate students
- International Centre for Students
  - Immigration and settlement supports
  - Self-Isolation Program
  - Peer-to-peer connection
  - Study abroad and intercultural volunteering
- Get involved in the Global Community

University of Victoria  
International Enrolment



# Student Population: Indigenous

- 6.6% of all undergraduates
- 8.4% of all graduates
- New AVP Indigenous position at UVIC to further institutional commitments around truth, respect and reconciliation and develop a new Indigenous Plan
- Indigenous cluster hiring in Student Services designed to add 5 new FTE across a range of primary advising and support areas

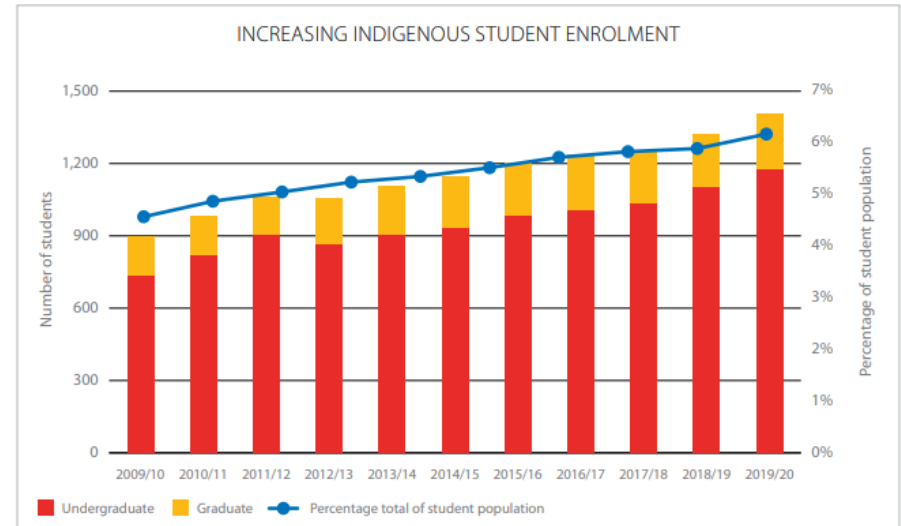


Figure 10: Since 2009/10, Indigenous student enrolment has grown dramatically, from 973 to 1,145. We continue working towards our SEM 2019 goal of doubling Indigenous enrolment by 2029 so that Indigenous students comprise at least 10% of our overall student population.





# Student Population: Students with disabilities

- Provincial landscape continues to change with the Accessibility Act – we are currently update Policy AC1205
- Universal instructional design – collaboration with the LSTI around course re-design
- Centre for Accessible Learning (CAL) provides programs and coordinates academic accommodations for students

## Students registered with CAL:

	2013-14	2014-15	2015-16	2016-17	2017-18	2018-2019	2019-2020	2020-2021
Total	1171	1153	1306	1525	1588	1610	2088	2216







# Undergraduate affordability and employment

- COVID-19 caused significant financial stress for students
- 48% of undergraduate students are employed, working an average of 16.5 hours/week. Of those half report employment negatively impacting academic achievement
- On campus employment, co-op/practica/interships all have positive impacts on student retention and success
- Student Awards and Financial Aid administers bursaries, scholarships, and work study opportunities



# Health & wellness

- Student Wellness Centre
  - Combining Health, Counselling and Multifaith services for students' holistic health
- SupportConnect
  - Free confidential mental health support available 24/7
- Centre for Athletics, Recreation and Special Abilities (CARSA)
  - Vikes Recreation





# Welcoming a double cohort

- Orientation events for first- and second-year students
- Pre-arrival program
- Faculty-specific events

UNIVERSITY OF VICTORIA  
NEW STUDENT  
**connect**  
PROGRAM

